

Supplemental Information

Table S1. The active compounds of Huanglian decoction.

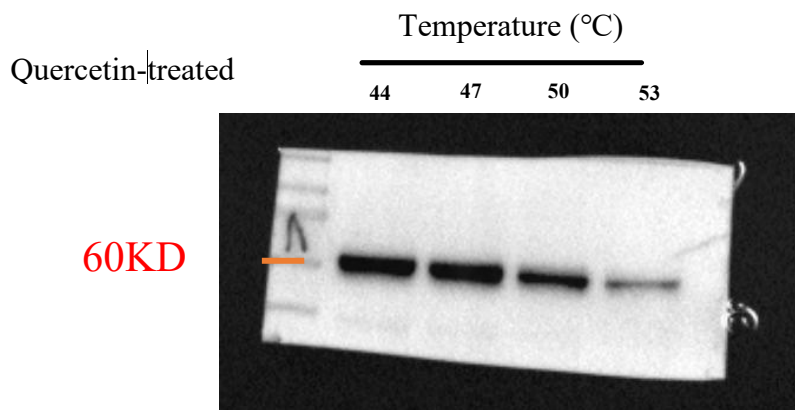
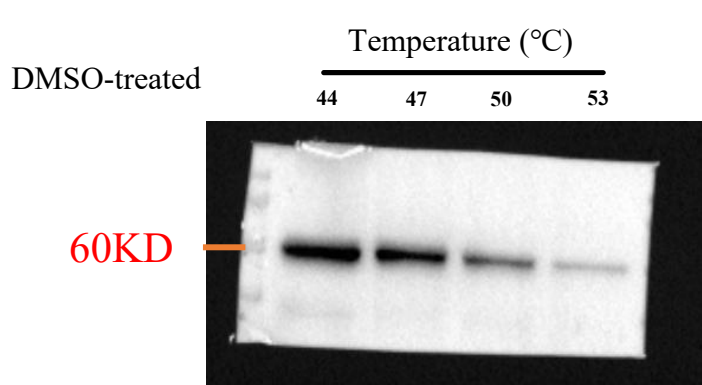
Mol ID	Molecule name	OB (%)	DL
MOL001040	(2R)-5,7-dihydroxy-2-(4-hydroxyphenyl) chroman-4-one	42.36	0.21
MOL001494	Mandenol	42.00	0.19
MOL002883	Ethyl oleate (NF)	32.40	0.19
MOL000358	beta-sitosterol	36.91	0.75
MOL000449	Stigmasterol	43.83	0.76
MOL000098	quercetin	46.43	0.28
MOL002501	[(1S)-3-[(E)-but-2-enyl]-2-methyl-4-oxo-1-cyclopent-2-enyl] (1R,3R)-3-[(E)-3-methoxy-2-methyl-3-oxoprop-1-enyl]-2,2-dimethylcyclopropane-1-carboxylate	62.52	0.31
MOL002514	Sexangularetin	62.86	0.30
MOL000359	sitosterol	36.91	0.75
MOL001454	berberine	36.86	0.78
MOL002894	berberrubine	35.74	0.73
MOL002897	epiberberine	43.09	0.78
MOL002903	(R)-Canadine	55.37	0.77
MOL002904	Berlambine	36.68	0.82
MOL002907	Corchoroside A qt	104.95	0.78
MOL000622	Magnograndiolide	63.71	0.19
MOL000785	palmatine	64.60	0.65
MOL001458	coptisine	30.67	0.86
MOL002668	Worenine	45.83	0.87
MOL000422	kaempferol	41.88	0.24
MOL000953	CLR	37.87	0.68

OB: oral bioavailability; DL: drug-likeness.

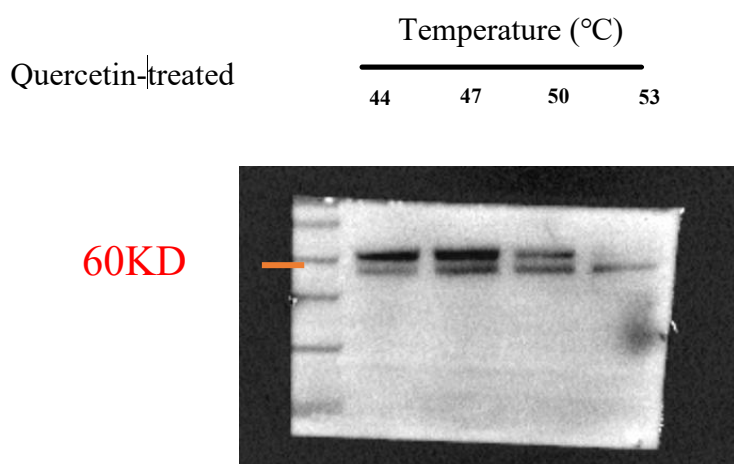
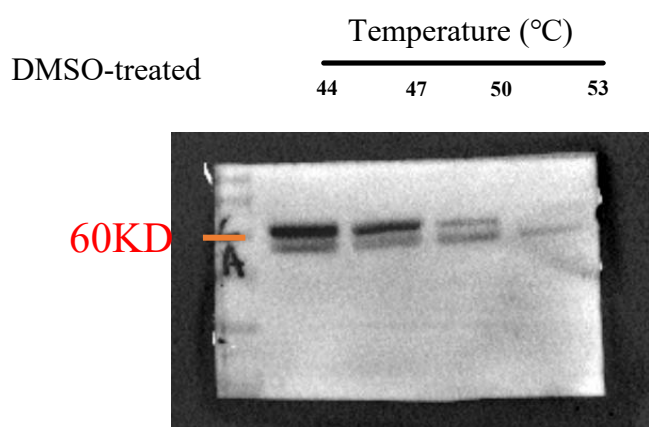
Fig. S1.

cell line: SW480

Protein: AKT



Replication 2



Replication 3

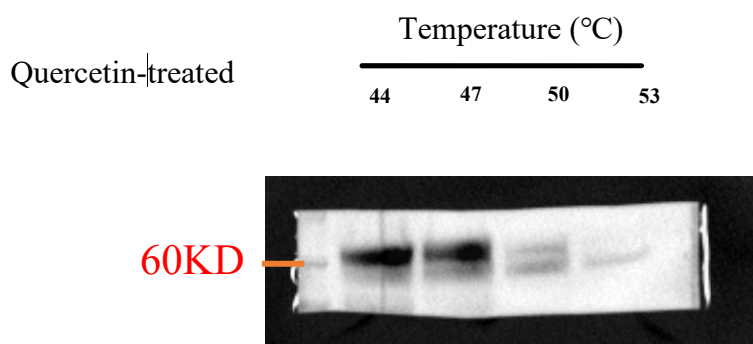
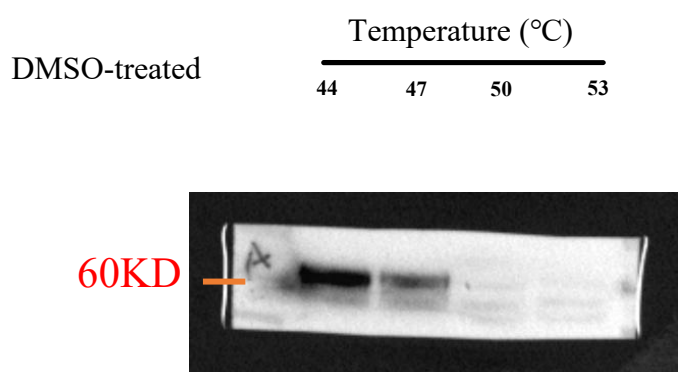


Fig. S1: WB original data of Fig. 5B. The target protein is indicated within the red dashed box.

Fig. S2 cell line: SW480

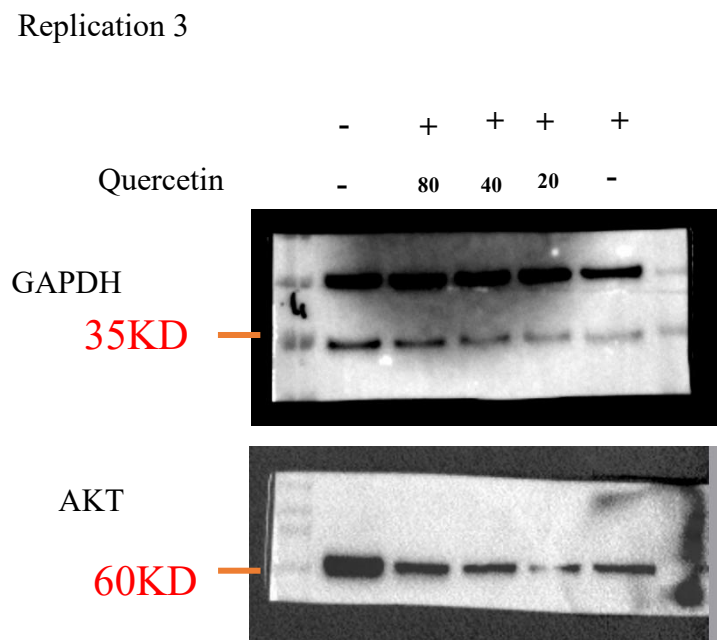
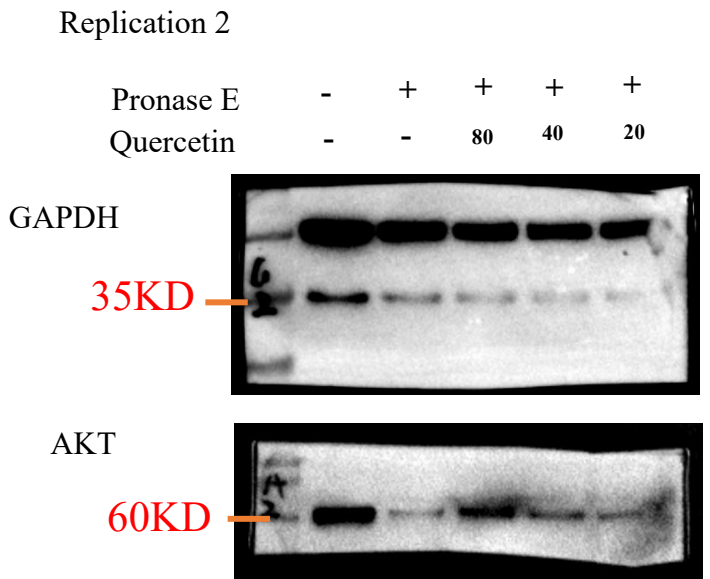
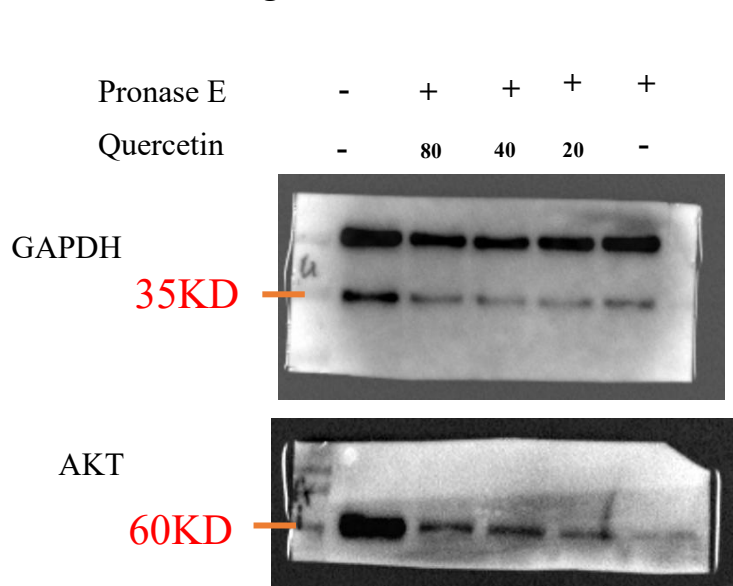


Fig. S2: WB original data of Fig. 5C. The target protein is indicated within the red dashed box.

Fig. S3 cell line: SW480

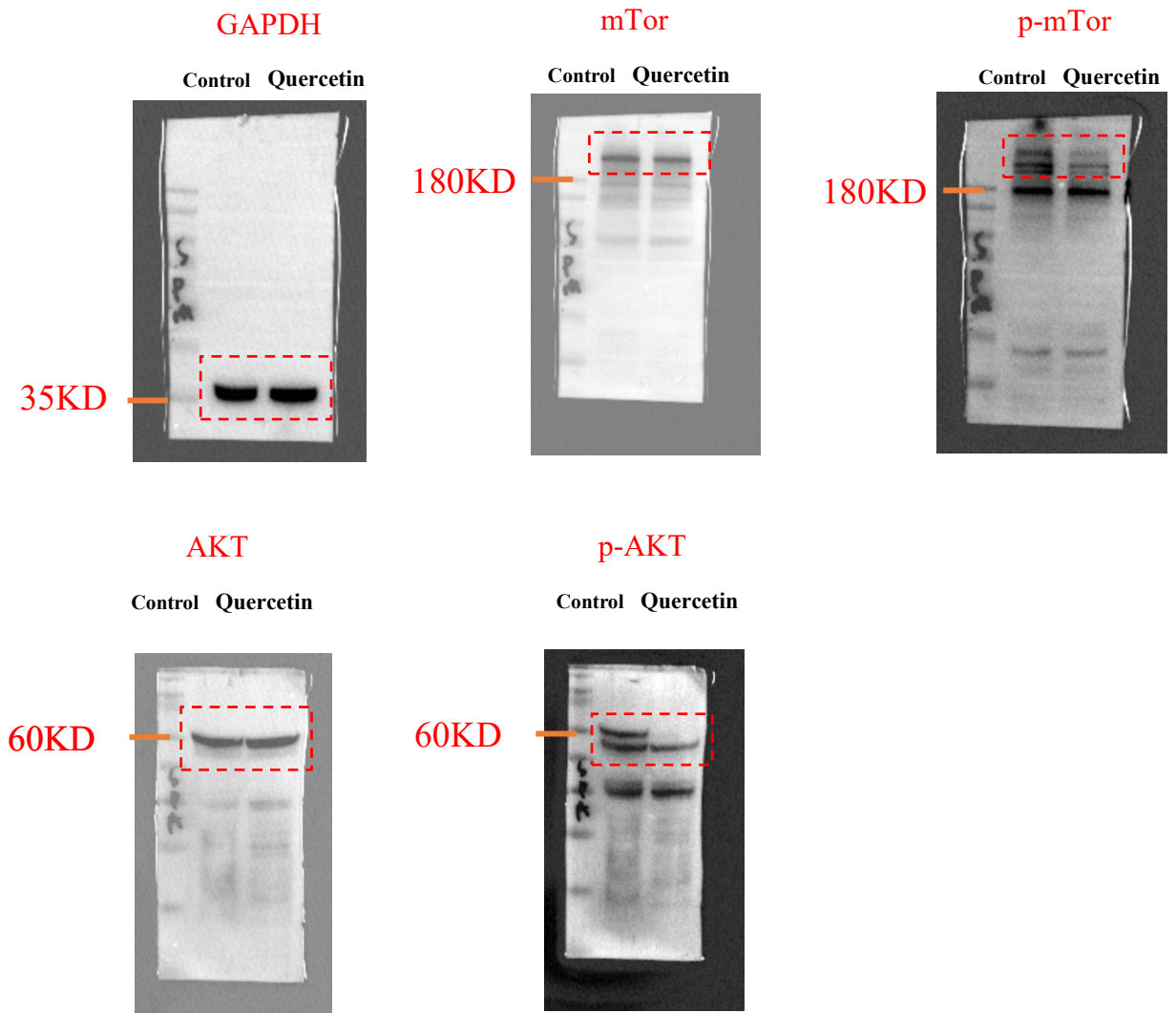


Fig. S3: WB original data of Fig. 6A. The target protein is indicated within the red dashed box.

Fig. S4 cell line: Caco2

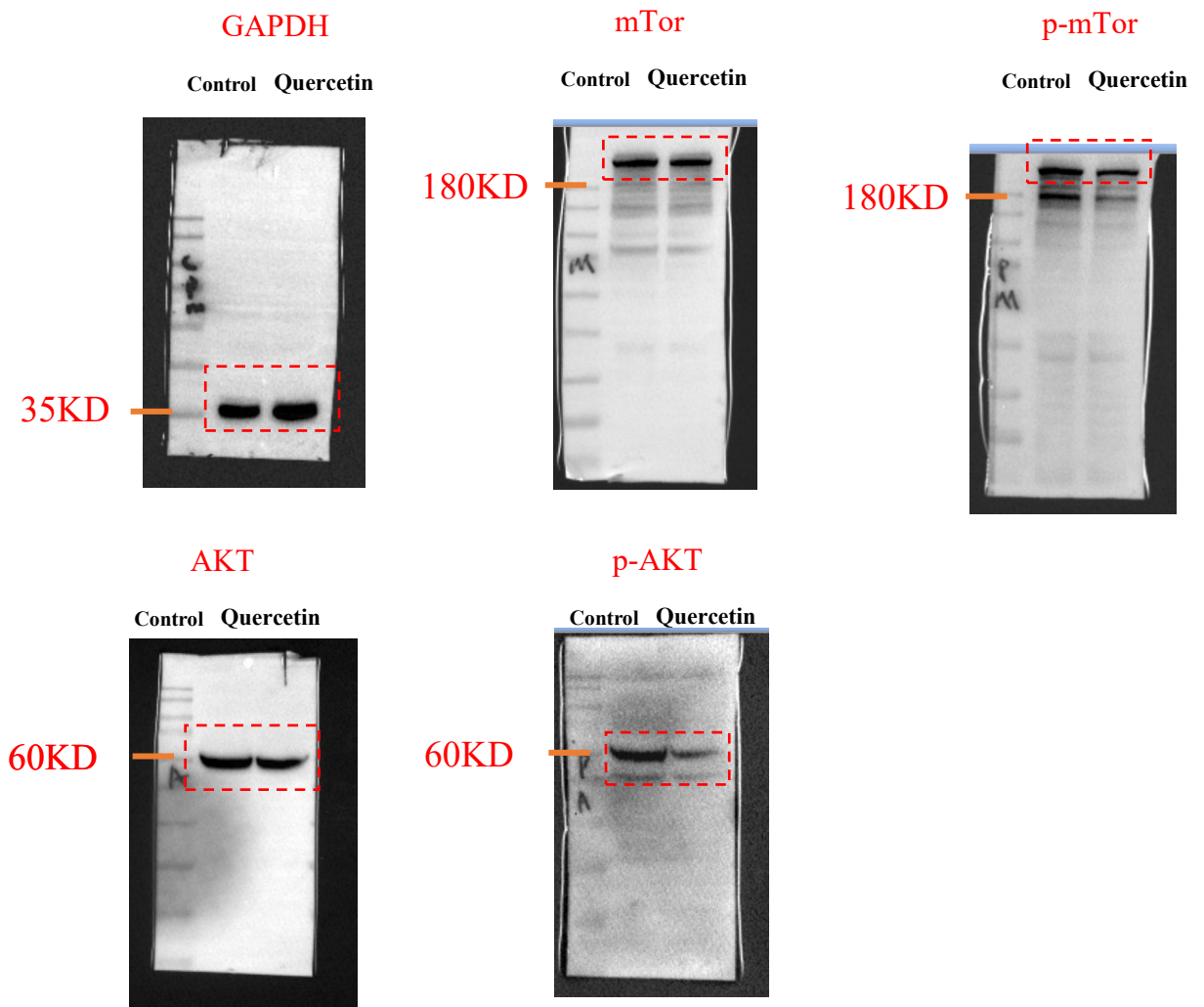


Fig. S4: WB original data of Fig. 6B. The target protein is indicated within the red dashed box.